



DR. JOHN R. RAYMOND, SR.
Medical College of Wisconsin



KEN GOLDSTEIN
University of San Francisco



Business Strategies

DURING THE PANDEMIC





Tim Sheehy

President

Metro Milwaukee Association of Commerce

THANK YOU

MMAC member

 **SPACES.**

As MMAC transitions offices, we want to thank Spaces for our temporary home at their North Water Street location.

With over 3,000 global locations and 10 in Wisconsin, Spaces makes it easy to have a productive day at work.

Their all-inclusive, flexible offices and coworking make getting to work easy and affordable.



www.spacesworks.com/milwaukee/north-water-street

Health Benefits Coverage with UnitedHealthcare

UnitedHealthcare is MMAC's new partner of the MMAC affinity offering of All Saver's alternate funding and UnitedHealthcare specialty lines of coverage for groups of 5-99 employees.

The health benefits offerings allows small businesses to purchase employee benefits that are typically reserved for large companies.

MMAC brokers can also offer UnitedHealthcare specialty lines of coverage including: Critical Illness, Accident Protection, and Hospital Indemnity as well as dental, vision and life insurance.

Contact your MMAC broker or visit uhc.com/MMAC.

There's no limit
to what care can do



United
Healthcare

Manage health care costs without sacrificing coverage.

UnitedHealthcare and Metropolitan Milwaukee Association of Commerce (MMAC) have come together to provide small businesses an All Saver's® Alternate Funding plan that offers:

- A variety of cost-sharing plan designs to help meet the needs of both you and your employees.
- A nationwide network of health care providers.
- Wellness programs at no extra cost, including a walking program that rewards participants when daily step goals are reached.

Ask for a no-obligation quote today.

Contact our MMAC brokers
or visit uhc.com/MMAC2.



Insurance coverage provided by or through UnitedHealthcare Insurance Company or its affiliates. Administrative services provided by United HealthCare Services, Inc. or their affiliates. Stop-loss insurance is underwritten by All Saver's Insurance Company (except MA, MI, and NJ), UnitedHealthcare Insurance Company in MA and MI, and UnitedHealthcare Life Insurance Company in NJ. 5150 AMB Blvd., Green Bay, WI 54313 (800) 291-0534. Health plan coverage provided by or through UnitedHealthcare of Wisconsin, Inc.

©2010-2011 United HealthCare Services, Inc. 20-125255

MMAC
Metropolitan Milwaukee
Association of Commerce

UnitedHealthcare

MKE HEALTH & ECONOMY BRIEFING

*On Wisconsin's Afternoon News
Tuesday @ 4:20pm*



John R. Raymond, Sr., MD
*Medical College of Wisconsin
President and CEO*



Tim Sheehy
MMAC President





MMAC COVID-19 UPDATE

10.06.2020

Presented by John R. Raymond Sr., MD



John R. Raymond Sr., MD

President and CEO

Medical College of Wisconsin

Analytics by Andrew Yaspan

MCW Institute for Health and Equity

CUMULATIVE PEOPLE TESTED REPORTED AS OF YESTERDAY

<u>Wisconsin</u>	<u>Milwaukee</u>
1,606,936	293,587
<u>Negative</u>	<u>Negative</u>
1,472,577	263,205
Positive	Positive
134,359	30,382

- # of people tested reported yesterday in WI = **8,560**
- Highest single daily total of people tested was **16,344** on 09.30.2020
- Testing capacity: Up to **39,234**. 116 laboratories currently testing. 22 planning to test.

DAILY POSITIVE CASES

<u>Wisconsin</u>	<u>Milwaukee</u>
1,696	64
<u>% Case Positivity</u>	<u>% Case Positivity</u>
19.7%	12%
7-day average trending stable	7-day average trending favorably

- Daily cases have exceeded 2,000 thirteen times over last 20 days since first exceeding 2,000 on 09.16.2020
- Previous highest daily positive cases:
WI: **2,829** on 09.30.2020
MKE: **477** on 05.29.2020

Cumulative Patients: 7,702

Increasing

(5.7% of positive cases)

Inpatients: 782

Increasing

(Previous high: 714 on 10.04.2020)

(Low: 235 on 7.05.2020)

ICU Patients: 209

Increasing

(Previous high: 208 on 10.01.2020)

(Low: 65 on 7.05.2020)

ICU Capacity: 263

Available ICU Beds

Decreasing

Ventilator Capacity: 1,919

Stable

PPE Trends

Improved

Most critical needs:
gowns and paper masks

- Hospitalizations are rising in all seven Healthcare Emergency Readiness Coalition Regions
 - COVID-19 hospitalizations at or near all-time highs with exponential growth for six HERC regions:
 - Fox Valley (130), North Central (107), Northeast (127), Northwest (37), South Central (99), and West (44)
- ICU admissions are rising in all seven Healthcare Emergency Readiness Coalition Regions
 - COVID-19 ICU admissions are at or near all-time highs for Wisconsin and for six HERC regions:
 - Fox Valley, North Central, Northeast, Northwest, South Central, and West
- ICU censuses are high in six Healthcare Emergency Readiness Coalition Regions
 - Fox Valley (87%), North Central (70%), Northeast (83%), Northwest (89%), South Central (84%), and Southeast (84%)
- Southeastern HERC (includes Milwaukee)
 - COVID-19 hospitalizations and admissions are slowly rising
 - On watch for boomerang from other regions of the state

VARIOUS COVID-19 INDICATORS – 10.05.2020

Learn more:
covid19.mcw.edu

% OF CASES BY RECOVERY STATUS

Recovered	80.7%
Active	18.3%
Died	1.0%

CUMULATIVE DEATHS

	<u>Wisconsin</u>	<u>Milwaukee</u>
	1,381	434
Male:	55.1%	54.4%
Female:	44.8%	45.6%
Black/African American*:	17.2%	35.7%
White:	75.1%	44.2%
Hispanic/Latinx*:	11.2%	15.7%

POSITIVE CASES

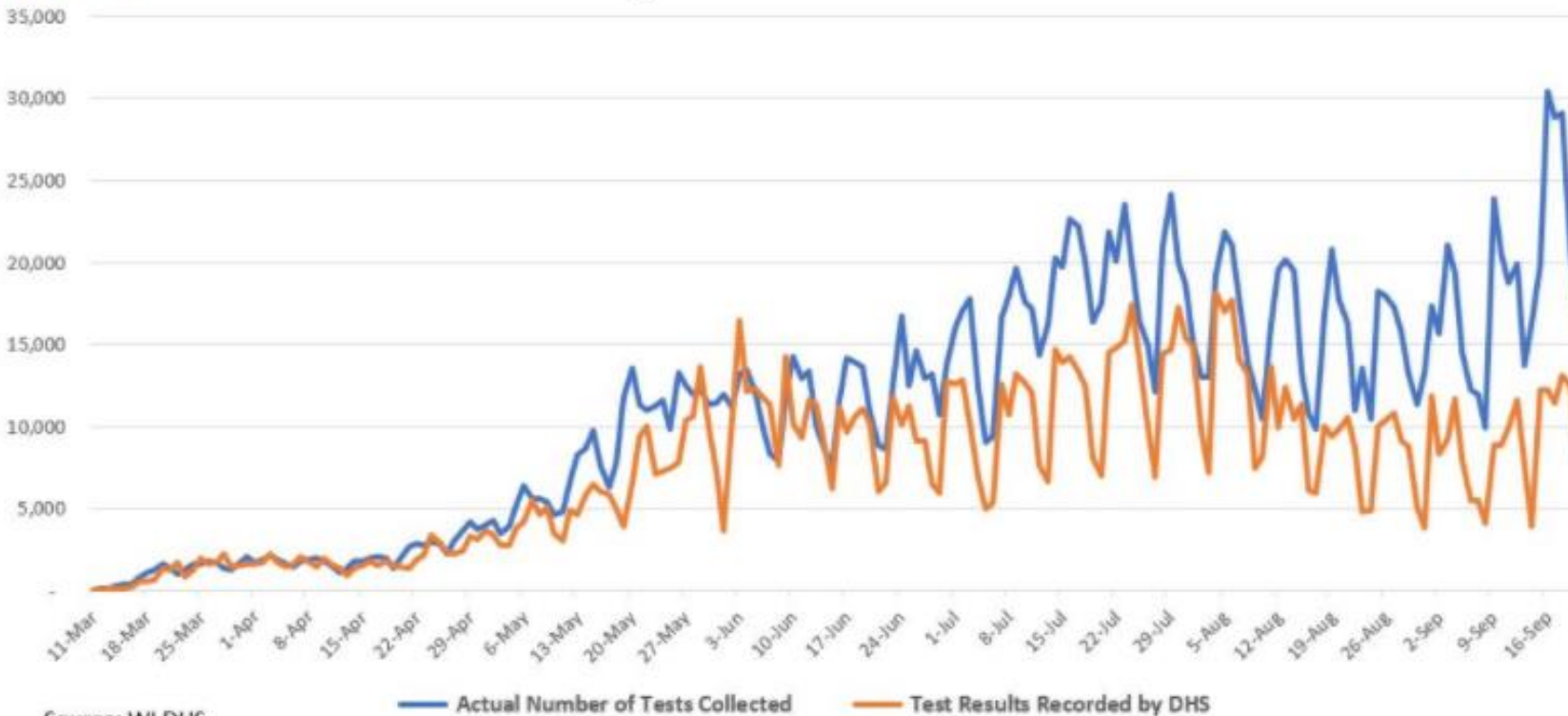
	<u>WI</u>	<u>MKE</u>
Doubling time (days):	43.9	86.1
7-day growth rate:	1.9%	0.8%
	<i>Increasing</i>	
R number:	1.03	1.0

*Totals exceed 100% due to overlap between Black/ African American and Hispanic/Latinx

Bad Math Driving Wisconsin's Exploding Positive Test Rate? 09.23.2020



Actual Testing Far Exceeds DHS' Results Record



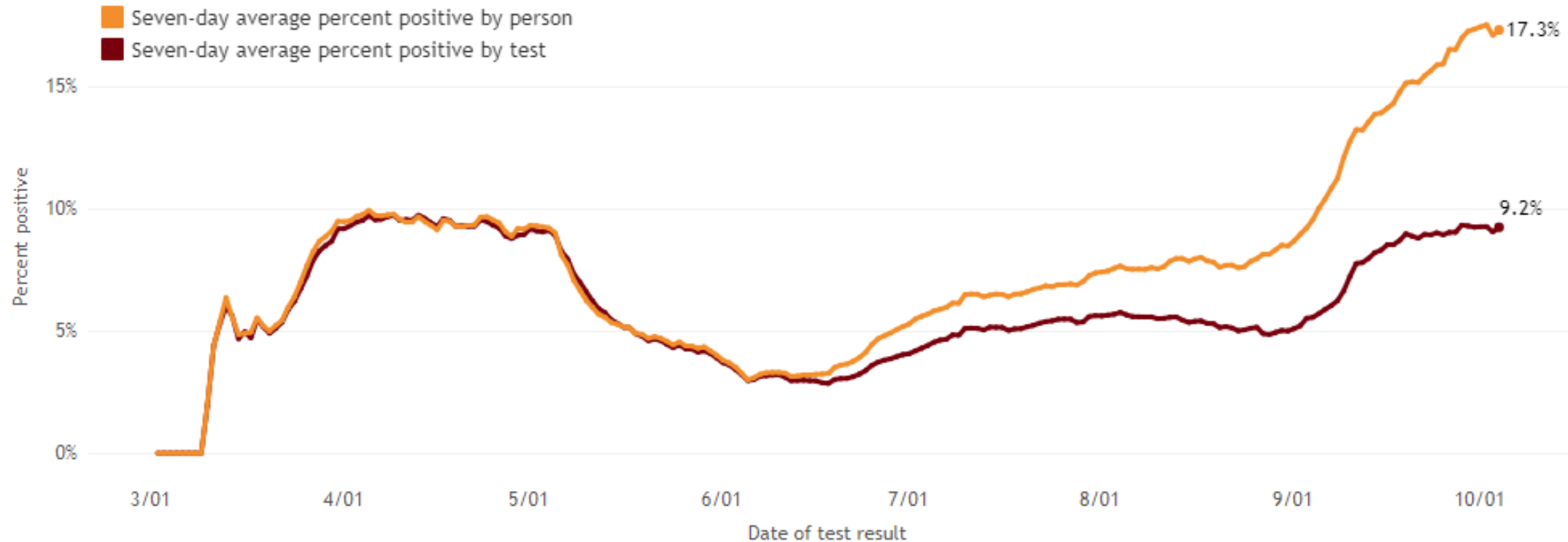
← [Number of tests reported]

← [Number of people reported]

<https://www.maciverinstitute.com/2020/09/bad-math-driving-wisconsins-exploding-positive-test-rate/>

Wisconsin DHS now tracks positivity rates two different ways

Updated: 10/5/2020



<https://www.dhs.wisconsin.gov/covid-19/data.htm>

- **POLITIFACT 09.29.2020: “Analysis bashing DHS COVID-19 calculations is built on errors, omissions”**
 - Wisconsin DHS has used the method in question since August 2020 and has explicitly described it on their dashboard. It has not changed during the surge.
 - DHS’s original approach is used by many other states. *New York Times*
 - DHS’s original approach corrects for people who are tested multiple times
 - Nursing homes, healthcare workers, students, hot spots, *etc.*
 - DHS’s approach is the correct public health method. It prevents results from being skewed by people who are tested multiple times. *Johns Hopkins University*
 - Trend, rather than absolute number, is a Wisconsin “gating criterion”
 - **POLITIFACT**: Claim is “both false and ridiculous, or as we call it, Pants on Fire”
The Poynter Institute

<https://www.politifact.com/factchecks/2020/sep/29/maciver-institute/analysis-bashing-dhs-covid-19-calculations-built-e/>

- We use multiple external data sources for these presentations
 - Wisconsin Hospital Association: wha.org/COVID-19Update
 - Wisconsin Department of Health Services: <https://www.dhs.wisconsin.gov/covid-19/index.htm>
 - Milwaukee County: <https://county.milwaukee.gov/EN/COVID-19>
 - Reproductive number calculator: [Rt.live](https://rt.live)
 - Wisconsin Electronic Disease Surveillance System (secure access required)
 - Milwaukee County Unified Emergency Operations Center (secure access required)
- Medical College of Wisconsin analytics
 - Institute for Health and Equity
 - Division of Epidemiology
 - Epidemiology Data resource Center and Geographic Information System



Kenneth Goldstein

Professor of Politics

University of San Francisco



DR. JOHN R. RAYMOND, SR.
Medical College of Wisconsin



KEN GOLDSTEIN
University of San Francisco



Business Strategies

DURING THE PANDEMIC



HOW TO PROSPER DURING UNCERTAINTY

Wednesday, October 28, 2020 10:00 AM -
11:30 AM CST

Webinar

How to Prosper During Uncertainty:

Cut through fear & politics by using data to strengthen
your business

Presented by the CEOs of Growing Businesses (CGB)



With
Brian Beaulieu
CEO of ITR Economics

Sponsors



The logo for Delta Dental, consisting of a white triangle icon followed by the text "DELTA DENTAL" in white uppercase letters on a green rectangular background.

The logo for DeWitt Law Firm, with "DeWitt" in a large blue font and "Law Firm" in a smaller blue font to the right.

The logo for SIKICH, featuring a stylized black and white icon of three stacked horizontal bars to the left of the text "SIKICH" in a bold black font.

The logo for BizTimesMedia, with "BizTimes" in blue and "Media" in orange, both in a bold sans-serif font.